

MAXDoor Model HD

Heavy Duty Vertical Lifting Fabric Door

CAGE CODE 8AUG0



MAXDoor HD 50-ft wide x 50-ft high

Size up to :

- 60' wide (18288) x 70' high (21336mm)
- Larger door openings require UL-XL

Speed:

- 8-10 inches (200-300mm) per second
- Other speeds are available

Strength:

- Self-supporting, Low-profile Twin Channel Head Member
- Self-supporting Structural Steel Side Frames
- Structural Steel Guides (Aluminum guides are available)
- High Wind-load Capacity
- Heavy-duty Horizontal Beams: 6061-T6 Aluminum
- Industrial Direct Drive Gear-motor with Brake
- 6" Deep Dual Layer Fabric-Air-Fabric Door Panel
- 22-oz. Heavy Duty PVC Fabric
- Beam Size UHMW Guide Blocks

Safety:

- Direct Drive Gear-motor with Brake
- Multiple Lifting Belts
- Auxiliary Hoist Brake System
- Manual Brake Release
- 2-piece Door Guides are free of any Belts or Devices
- Over Travel Limit Switch
- Wireless Reversing Edge and Photo-eyes
- Over Travel Protection
- PLC Monitored Circuits

MAXDoor

1020 W. 14-Mile Road
Clawson, Michigan 48017

Phone (248) 915 5838

Fax (866) 285 5139

Www.maxdoor-usa.com

sales@maxdoor-usa.com

MAXDOOR Model HD

Heavy Duty Vertical Lifting Fabric Door

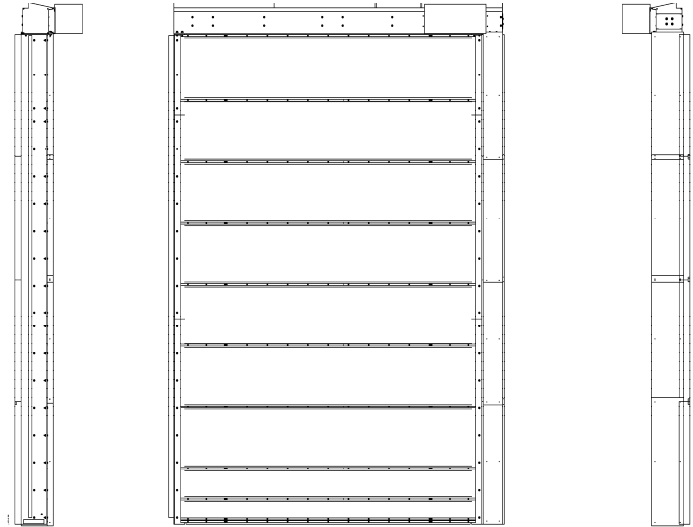
CAGE CODE 8AUG0

Fabric Colors:

- Blue Green White
- Tan Black Red
- Grey Yellow Translucent

Options:

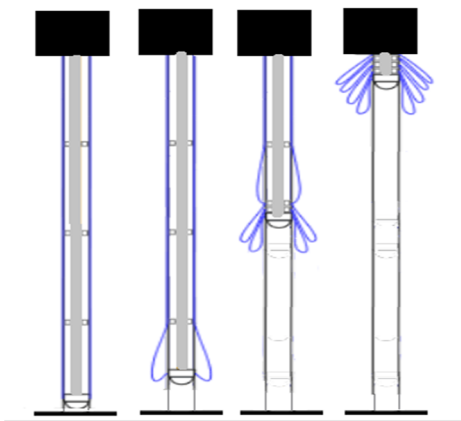
- Anti-Collision Door Protection System
- Severe Duty Motor
- Automatic Door Systems
- Operator Mounted Controls
- Wireless Reversing Edge
- Door Activation Sensors
- Aluminum Guide Rails
- Alternate Fabrics for Sound, Heat Cold, Security, Vision, Insulation
- Insect/Bird Screen Fabric
- Heated Head-member
- Brush Weather-seals
- Industrial Long Distance Radio Controls
- Weight Counter-balance System
- Faster Open and Close Speed
- Control Panels with HMI



Space Requirements:

- Left & Right Side Room: 9.5 inches (241mm) each
- Left & Right Guide Projection: 16 inches (419mm)
- Head Member Height: 16.5 inches (406mm)
- Head Member Projection: 19 inches (482mm)
- MAXDoors are manufactured for a clear opening height and width. No fabric or obstructions within the door opening. Example: the total fabric and beam stack height for a 40' high (14,960mm) MAXDOOR HD is 8' 10" (2692mm). Shorter doors require less stack height.

Contact us for your exact door size space requirements



MAXDoor 

USA
MADE IN THE

1020 W. 14-Mile Road
Clawson, Michigan 48017
Phone 248 915 5838

Fax 866 285 5139

Www.maxdoor-usa.com

sales@maxdoor-usa.com