

# MAXDoor Model UL

## Vertical Lift Fabric Doors

### CAGE CODE 8AUG0



- MAXDoors are designed for the toughest environments
- Simple design ensures minimum Operation & Maintenance costs
- Head Member and Side Frame/Guides utilize structural steel components which provide superior overall strength
- Horizontal beams manufactured provide the highest wind-load
- Fabric choices include a variety of materials for special environments including high temperature, cut proof and anti-static
- MAXDoor are custom built for each application
- MAXDoor offer a variety of Control Panel types and options

#### Size up to:

- 45' Wide x 70' High
- Larger openings use model HD or UL-XL

#### Speed:

- 10-12 inches per second
- Faster Operating Speed are Available

#### Strength:

- Structural Steel Head member
- Structural Steel Side Frames
- Structural Steel Door Guides (Aluminum door guides are available)
- Horizontal Beams spaced for 20-psf wind load. Higher Wind-load capacity is available
- Fabric-Air-Fabric door panel
- Aluminum rectangle tube horizontal beams
- 22-Oz. Heavy-duty PVC Fabric
- Tube size UHMW Guide Blocks

#### Safety:

- Minimum 4 Lifting Belts
- Maintenance Safety Switch
- Photo-eyes for monitoring opening
- Wireless Reversing Edge
- Parallel Shaft Mounted Gear-motor
- 2-piece Door Guides are free of any Lifting Belts or Devices
- Manual Brake Release at Motor
- Manual Motor Operation (Power Loss)
- Lockable Disconnect on Control Panel
- Motor Overloads and Circuit Fusing
- PLC Monitored Circuits
- Over Travel Protection
- Door Position Switches
- Main Shaft Auxiliary Brake System

#### Simple:

- Excellent Environment separation by one piece, dual layer fabric curtain
- Fabric over-laps interior and exterior door guide surfaces for excellent Weather seal
- Two piece door guides are easy to maintain
- Designed for 20-years Service Life

# MAXDoor Model UL

## Vertical Lift Fabric Doors

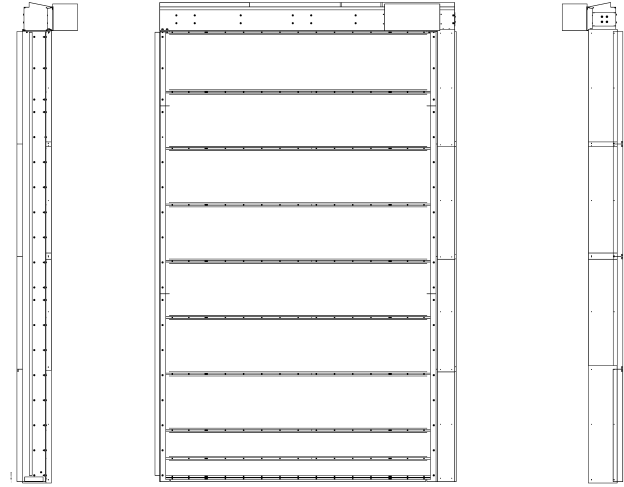
CAGE CODE 8AUG0

### Fabric Colors:

- Blue      Green      White
- Tan      Black      Red
- Grey      Yellow      Translucent

### Options:

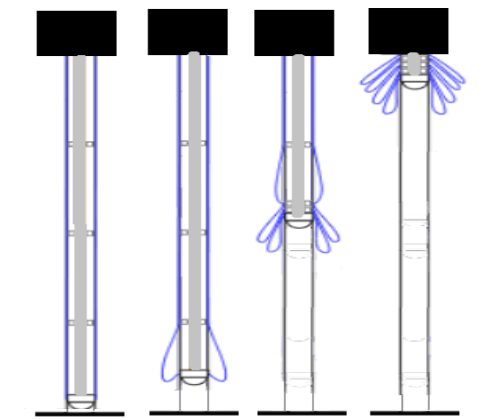
- Anti-collision Door Protection System
- Severe Duty Motor
- Head Member Mounted Controls
- Wireless Reversing Edge
- Door Activation Sensors
- Aluminum Guide Rails
- Windows/Screens
- Insulated Fabric
- Sound Reduction Fabric
- Heat Resistant Fabric
- Low temperature Fabric
- Impact resistant or flexible guide rails
- Heated Head-member
- Brush Weather seals
- Industrial Long Distance Radio Controls



### Space Requirements:

- Left & Right Side Room: 10 inches each
- Left & Right Guide Projection: 15 inches
- Head Member Height: 16 inches
- Head Member Projection: 18 inches
- All door sizes are manufactured for clear opening height and width. No obstructions in the door opening.
- Space requirement example: Total fabric and beam stack height required for a 30' high Maxdoor UL is 46" in addition to the clear opening height. Shorter doors require less stack height.

Contact us for your exact door size space requirements



1020 W. 14 Mile Road  
Clawson, Michigan 48017

Phone (248) 915 5838

Www.maxdoor-usa.com

Fax 866 285 5139

sales@maxdoor-usa.com