

# MAXDOOR Model HD

## Heavy Duty Vertical Lifting Fabric Door

### Provide Long Lasting Door Solutions for the Toughest Industries!

MAXDOORS are designed for the toughest industrial environments.

Our simple design ensures minimum operation and maintenance costs.

Head Member and Side Jamb/Guides utilize common structural steel components which provide superior overall strength.

Horizontal beams manufactured from structural rectangle tubes provide the highest wind load resistance.

Automatic or Push button door controls for any application.

Experience dictates how every MAXDOOR is manufactured.

#### Size up to :

- 60' wide x 60' high

#### Strength:

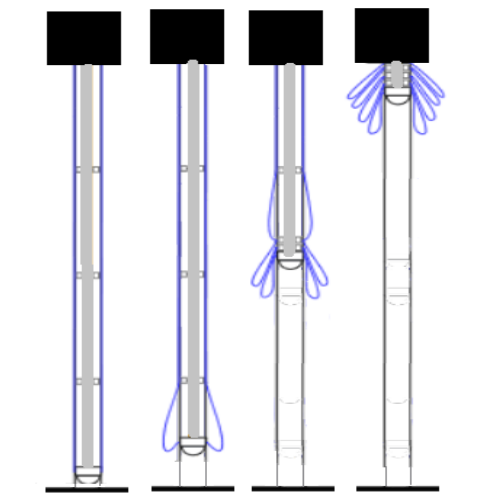
- 88-mph or 20-psf wind load is standard. Higher wind load is available for any size door
- 6 inch thick door panel
- Side Jamb/Guides manufactured from structural steel
- Pre-assembled and ready for installation

#### Speed:

- 10-12 inches per second is standard speed in both directions
- Faster Opening speeds are available
- Faster Closing speeds are available

#### Safety:

- Lifting belts with redundant lift belts
- Weight Counter Balance System
- Floor Level Brake Release and Manual Hoist w/ cut off safety switch
- Guide Blocks designed to break away during impact
- Guides are free of any belts, cables or mechanical devices



# MAXDOOR Model HD

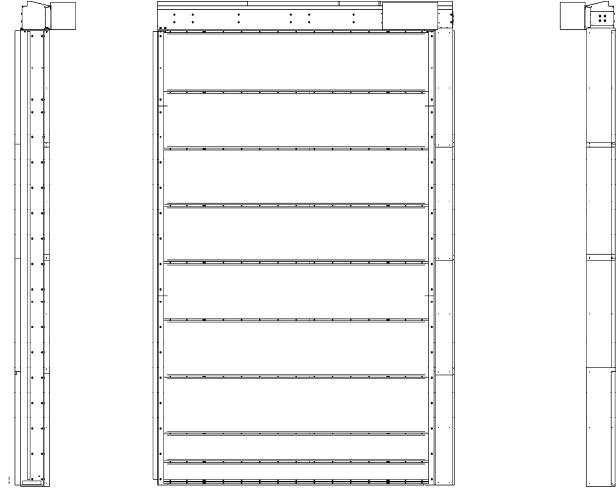
## Heavy Duty Vertical Lifting Fabric Door

### Fabric Colors:

- Blue      Green      White
- Tan      Black      Red
- Grey      Yellow      Translucent

### Options:

- Windows/Screens
- Insulated Fabric Curtain
- Sound Reduction Fabric
- Heat Resistant Fabric
- Low temperature Fabric
- Door Activation Sensors
- Anti-collision Door Protection System
- Wireless Monitored Reversing Edge
- Aluminum Guide Rails
- Impact resistant or flexible guide rails
- VFD, PLC Automated Control Panels
- Severe Duty Motor
- Weight Counter Balance System
- Operator Mounted Controls
- Heated Head-member
- Brush Weather seals
- Industrial Long Distance Radio Controls



### Space Requirements:

- Left & Right Side Room: 6.5 inches each less counter weight
- Counter Weight Tower adds 24" to width
- Left & Right Guide Projection: 16 inches
- Head Member Height: 16 inches
- Head Member Projection: 16 inches, 36" at operator
- All door sizes are manufactured for clear opening height and width. No obstructions in the door opening. For instance, the total fabric and beam stack height required for a 40' tall MAXDOOR HD is 5' 3" in addition to the clear opening height. Shorter doors require less stack height.

Contact us for your exact door size space requirements



### MAXDOOR

1020 W. 14-Mile Road

Clawson, Michigan 48017

P. 877 436 0302

F.866 285 5139

Www.maxdoor-usa.com

sales@maxdoor-usa.com