

MAXDOOR Model SD-HS

High Speed Vertical Lifting Fabric Door

Provide Long Lasting Door Solutions for the Toughest Industries!

MAXDOORS are designed for the toughest industrial environments.

Our simple design ensures minimum operation and maintenance costs.

Head Member and Side Jamb/Guides utilize common structural steel components which provide superior overall strength.

Horizontal beams manufactured from structural rectangle tubes provide the highest wind load resistance.

Automatic or Push button door controls for any application.

Experience dictates how every MAXDOOR is manufactured.



Size up to:

- 30' wide x 40' high

Strength:

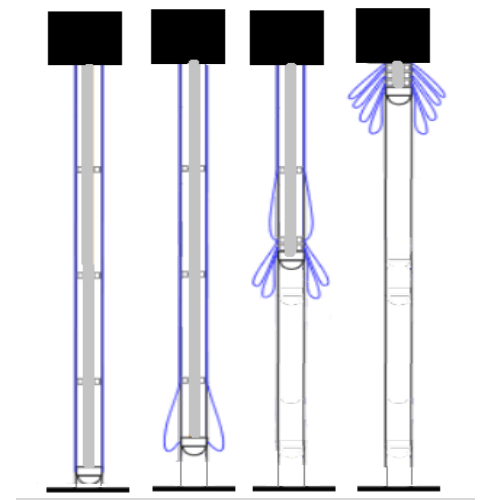
- 88-mph or 20-psf wind load. Higher wind load is available for any size door
- 4 inch thick door panel
- Side Jamb / Guides made from structural steel
- Pre-assembled and ready for installation

Speed:

- Standard high speed Opening is 36 inches per second when not specified
- Faster Opening speeds up to 60 inches per second are available
- High speed Closing of 24 inches per second . Other speeds are available

Safety:

- Lifting belts with redundant lift belts
- Floor Level Manual Hoist w/ cut off safety switch
- Guide Blocks designed to break away during impact
- Guides are free of any belts, cables or mechanical devices



MAXDOOR Model HD-HS

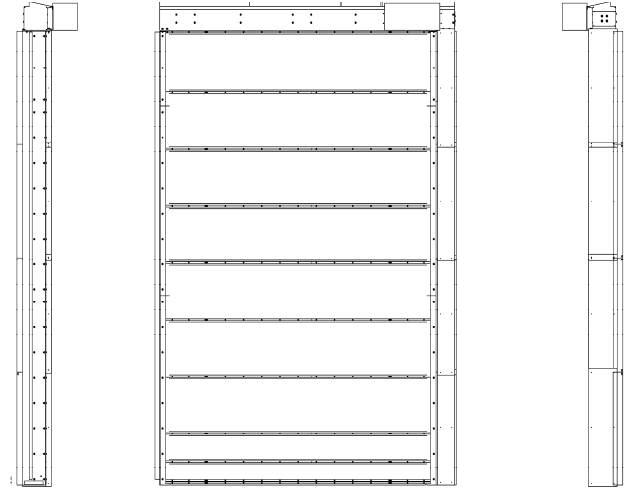
High Speed Vertical Lifting Fabric Door

Fabric Colors:

- Blue Green White
- Tan Black Red
- Grey Yellow Translucent

Options:

- Windows/Screens
- Insulated Fabric Curtain
- Sound Reduction Fabric
- Heat Resistant Fabric
- Low temperature Fabric
- Door Activation Sensors
- Anti-collision Door Protection System
- Wireless Monitored Reversing Edge
- Aluminum Guide Rails
- Breakaway horizontal beams
- Impact resistant or flexible guide rails
- VFD, PLC Automated Control Panels
- Severe Duty Motor
- Weight Counter Balance System
- Operator Mounted Controls
- Heated Head-member
- Brush Weather seals
- Industrial Long Distance Radio Controls



Space Requirements:

- Left & Right Side Room: 4 inches each
- Left & Right Guide Projection: 14 inches
- Side Mount Operator: Add 16 inches to width
- Head Member Height: 14 inches
- Head Member Projection: 20 inches
- All door sizes are manufactured for clear opening height and width. No obstructions in the door opening. For instance, the total fabric and beam stack height required for a 24' tall MAXDOOR SD is 51" in addition to the clear opening height. Shorter doors require less stack height

Contact us for your exact door size space requirements



MAXDOOR

1020 W. 14 Mile Road

Clawson, Michigan 48017

P. 877 436 0302

F. 866 285 5139

www.maxdoor-usa.com

sales@maxdoor-usa.com